

ULTRASONIC MILK ANALYSER BASED ON MS WINDOWS AND DATABASE APPLICATION

Lactoscan LW based on MS Windows

High-end ultrasonic technology for analyzing any kind of milk



- Internet Cloud Services
- e-mail & SMS support
- Multi-language support
- Touch-screen display
- Wireless keypad and mouse

KEY FEATURES:

- User-friendly: simple in operation, maintenance, calibration and installation
- Portable and compact design
- Very small quantity of milk required
- Low power consumption
- No use of hazardous chemicals
- One year full warranty

SPECIFICATIONS Lactoscan LW:

Parameter	Measuring range	Accuracy
Fat	from 0.01 % to 45%	± 0.06%
SNF	from 3% to 40%	± 0.15 %
Density	from 1000 to 1160 kg/m ³	± 0.3 kg/m ³
Protein	from 2% to 15%	± 0.15%
Lactose	from 0.01 % to 20%	± 0.20%
Added Water content	from 0 % to 70 %	± 3.0%
Temperature of milk	from 5°C to 40°C	± 1°C
Freezing point	from - 0,400 to - 0,700°C	± 0.005 °C
Salts	from 0,4 to 4%	± 0.05%
pH	from 0 to 14	± 0.05%
Conductivity	from 2 to 14 mS/cm	± 0.05 (mS/cm)
Kg	from 0 to 150 kg	± 0.025 kg
Total solids	from 0 to 50 %	± 0.17%

(option) 50 sec., 30 sec., 20 sec. measurement

Milk analyzer Lactoscan makes quick analysis of milk and liquid dairy products:

Cow milk (25%)

Whey

Concentrated milk (up to 1160kg/m³)

MEASURING PARAMETERS:

- Fat
- Solids-non-fat (SNF)
- Total Solids
- Density
- Protein
- Lactose
- Milk sample temperature
- Added water
- Salts
- Freezing point
- pH
- Conductivity
- Kg
- Ion meter



ENVIRONMENTAL CONDITIONS:

Ambient air temperature
10°C - 40°C (option 43 °C)
Milk temperature 1°C - 40°C
Relative humidity 30% - 80%

ELECTRICAL PARAMETERS:

Switching Adapter
Input: 100 - 240 V ~1.6 A max.
50-60 Hz
Output: +12 V 4.17A min.
Output power: 50 - 65 W

MECHANICAL PARAMETERS:

Dimensions: (W x L x H)
250x290x300 mm
Weight: 7 kg
Stainless steel box

Functions:

- Input information
- Communication - SMS and e-mail
- Active Formulae
- System log

Tables and formulae - delivers and price

- Reports: shift, daily, monthly, deliverer daily report, deliverer monthly report

Database services:

- Archive DBRes
- Restore DBRes
- Init DBRes
- Archive DBDel
- Restore DBDel
- Archive all Databases
- Restore All Databases
- DB Server

buy online on
www.lactoscan.com



ULTRASONIC MILK ANALYSER WITH MS WINDOWS AND DATABASE APPLICATION

pH measuring system
(degree of acidity) (option)
In-flow pH measuring system
(degree of acidity)
All parameters - measured in a single sample



HDMI (option)

pH probe Input

12V Output

12V Input
Power switch

Option:
automatic cleaning

Integrated pH meter



USB ports
(printer, bar-code reader, keyboard and mouse, remote display and weight scales)

RS232 interface port
(connection for remote display and weight scales)

LactoScan Analyser - Database (LSAn-DB)

LSAn-DB collecting information from Lactoscan® compatible measurement files and creating reports consistent with predefined formulae.

The application saves data collected to a MySQL database.
Local and Cloud Based DB



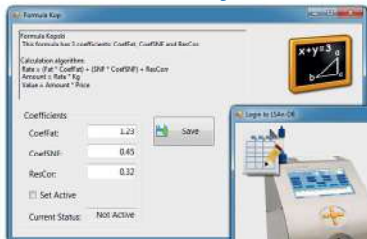
Cloud Database Application.

Total solution for milk collecting process.
Windows tablet, wireless, cloud services based system:

- Easy to use, integrated, internet based;
- Automated farmer identification (bar-code card);
- Real-time SMS and e-mail alerts;
- Remote back-up support and maintenance, updates;
- Payment schemes calculations;
- Real-time online access to milk data;

Advantages:

- remote modification of the rate-charts
- remote support and maintenance
- remote alert for changes in calibration



Milkotronic Dairy United - Nova Zagora
Report generated: 2015-11-29 18:03:09

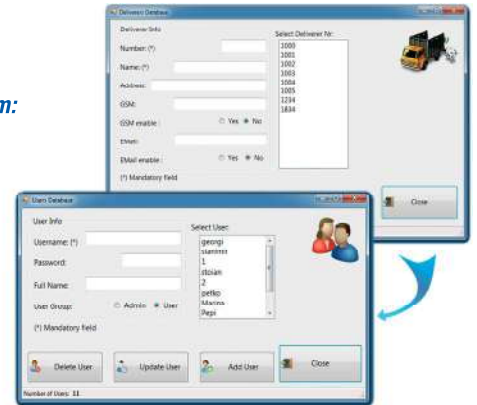
Report for: 2015-04-09 | Type of report: Shift / Large | Shift: Morning

Calibration type: 2									
Time	Deliverer	Litres	Fat	SNP	Rate	Amount	Value		
11:57:48	1001	1.34	3.97	22.69	20.12	26.90	847.26		
09:57:03	1114	12.53	4.33	25.24	4.54	56.89	732.69		
09:50:21	1234	2.5	4.11	23.92	5.26	13.90	179.03		
09:59:29	1914	32.57	4.03	24.92	8.56	181.09	2322.43		
09:59:50	2024	34.80	11.66	22.96	4.43	156.63	2017.39		
Average Fat: 7.23			Average SNP: 23.54			Average Rate: 0.48			
Total Amount: 435.47			Total Quantity: 83.44			Total Value: 5608.80			

Calibration type: 3									
Time	Deliverer	Litres	Fat	SNP	Rate	Amount	Value		
11:58:12	1002	3.45	3.87	23.69	4.54	15.66	201.74		
10:25:29	1234	19.54	4.22	24.92	8.56	59.50	752.43		
10:45:52	3000	17.07	4.43	22.91	11.24	197.49	2543.63		



Internet Remote Firmware Update
(Download Center)



Milk conductivity measuring system (option)

Milk conductivity changes depending on concentration of ions in the milk.

Milk conductivity can be used for:

- test of udder health (detection of subclinical mastitis);
- control of water evaporation grade in condense milk production;
- determination of dry milk solubility rate.